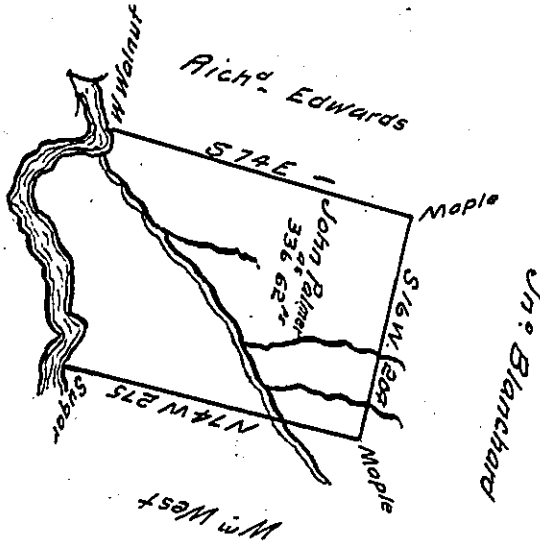


*Courses & Distances from  
W Walnut below to Sugar above*

- S 16 E .. 5
- S 20 W .. 18
- N 85 W .. 20
- S 74 W .. 10
- S 37 W .. 16
- South .. 6
- S 68 E .. 6
- S 31 E .. 16
- S 19 W .. 10
- S 46 W .. 17
- S 34 W .. 21
- S 13 W .. 28
- South .. 34
- S 86 E .. 12
- S 27 E .. 13
- S 50 W .. 20
- S 21 W .. 16 to sugar
- 268



*Draught of a Tract of Land Situated in Chest Township Clearfield  
County Containing Three Hundred Thirty Six Acres Six Two perches and  
the Usual Allowance of Six Per Cent for Roads &c. Surveyed the 25<sup>th</sup> Day  
of Sept. 1828 in pursuance of Warrant Dated the Sixth Day of August 1773  
Granted to John Palmer for 300 Acres.*

*To Gabriel Heister Esq<sup>r</sup>*

*D F*

*Surveyor General*

*Note the above Survey Interferes with Edmund Milne Wholly  
Warrant Dated 3<sup>rd</sup> of August 1773 Unoccupied No old Lines on*

*Either of the above Titles*

*D F*

*IN TESTIMONY that the above is a copy of the original remaining on file in  
the Department of Internal Affairs of Pennsylvania, made  
conformably to an Act of Assembly approved the 16th day of  
February, 1833, I have hereunto set my Hand and caused  
the Seal of said Department to be affixed at Harrisburg,  
this Twenty-eighth day of December 1908*

*Henry Howell*  
Secretary of Internal Affairs.